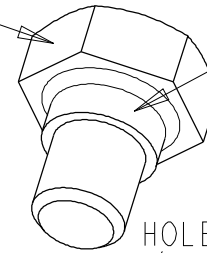


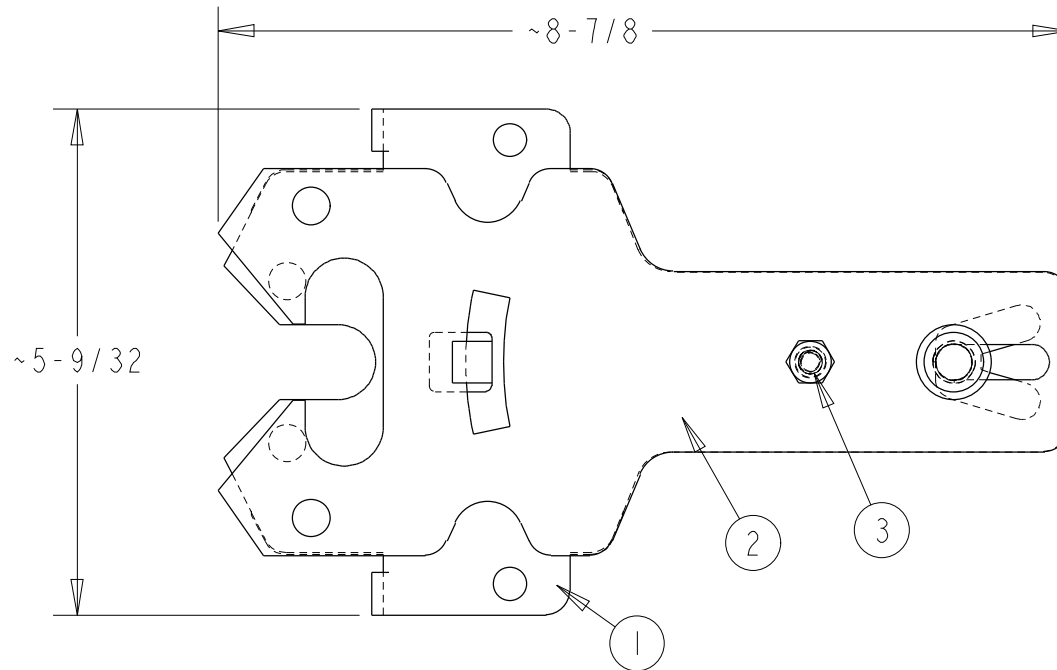
| No. | CONTENTS | QTY. |
|-----|-------------------------------|------|
| | LATCH ASSEMBLY INCLUDING: | |
| 1 | MOUNT PLATE - 2 SURFACE | 1 |
| 2 | CATCH PLATE | 1 |
| 3 | SHOULDER BOLT - 1/4-20 X 3/8" | 1 |
| 4 | SLIDE LOCK PIN | 1 |
| 5 | SPRING | 1 |
| 6 | WASHER | 2 |
| 7 | E-CLIP | 1 |
| 8 | POLY BAG WITH INSTRUCTIONS | 1 |

SPECIAL BOLT
(ITEM No. 3)

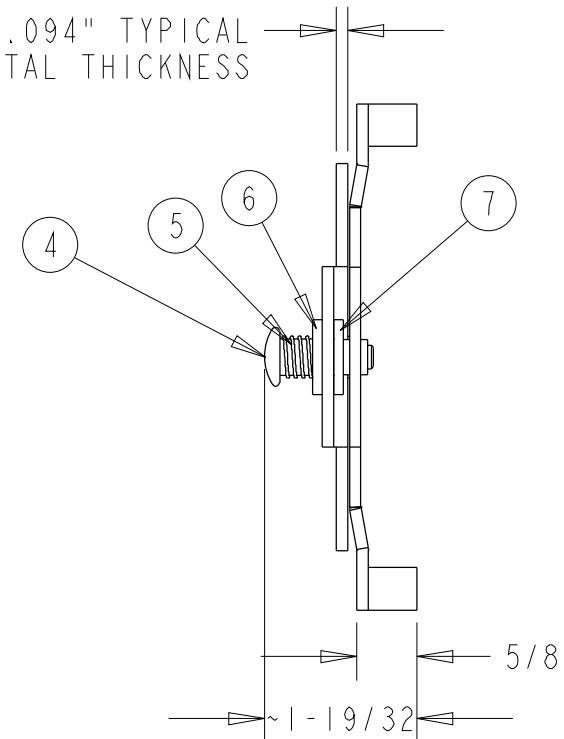


SHOULDER - $\varnothing 9.5\text{mm} \times 3.2\text{mm}$
THREAD - 1/4-20 X 0.267"

HOLE IN CATCH PLATE FOR SHOULDER:
 $\varnothing 10\text{mm THRU} \times 2.5\text{mm} (0.094\text{"} + \text{FINISH})$



0.094" TYPICAL
METAL THICKNESS



SCALE: 1/2 SIZE

NOTES:

1. DIMENSIONS SHOWN ARE NOMINAL.
2. FASTENERS MUST BE HPC SEAL COATED WITH BLACK POWDERCOATED HEADS PER APPROVED SAMPLE.

SEE APPROVED SAMPLE FOR PRODUCT DETAILS.
FINISH OF ITEMS 1, 2 AND 3: BLACK POWDER COAT.
SLIDE LOCK TO BE ASSEMBLED WITH E-CLIP.

12/21/2009

D&D 210006 LATCH DETAIL